



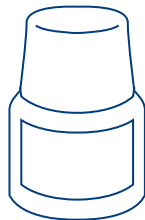
HOW TO MAKE A CANDLE HOLDER

PLEASE GET AN ADULT TO HELP YOU MAKE THIS

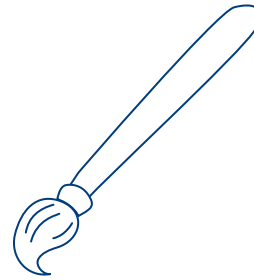
YOU WILL NEED:



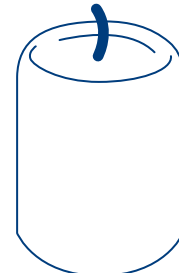
Jam Jar



Glass Paints



Paint Brushes



Candle

- 1 Paint your own design on the outside of the jam jar using the glass paints.
- 2 Place the candle inside the jar when the paint is dry.

WARNING:

Fire can be dangerous. Parental guidance is needed when lighting the candle.





HOW TO MAKE A TIN CAN LANTERN

PLEASE GET AN ADULT TO HELP YOU MAKE THIS

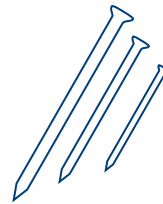
YOU WILL NEED:



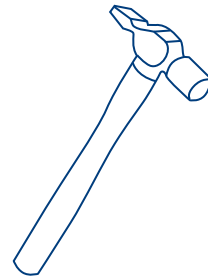
1 Tin Can
(Ring-Pull kind)



Water



Nails of
varied sizes



Hammer

- 1 Please only use a tin with a ring-pull opening as using tin openers tend to leave very jagged edges which can be highly dangerous.
- 2 Wash the tin thoroughly to remove the label.
- 3 Now fill the tin with water and put it in the freezer over night or until the water is frozen solid, (this will help when it comes to punch holes in the tin).
- 4 Take the tin out of the freezer and use a crayon to map out your design with dots.
- 5 PLEASE GET AN ADULT TO HELP YOU WITH THIS NEXT STAGE. Use the hammer and nails to punch different holes through the tin. You can make your own designs or use the patterns we have included.
- 6 When you have completed all the punching, leave the tin in the sink to thaw.
- 7 Once the ice has melted and the tin is dry, you're ready to add a candle. Why not experiment with different designs and scatter your lanterns outside.



EASTER EVE

Jesus' followers sometimes stay up all night in the candle light waiting to celebrate his return to life.

APRIL

7



PATTERNS FOR YOUR TIN CAN LANTERN

PLEASE GET AN ADULT TO HELP YOU MAKE THIS

